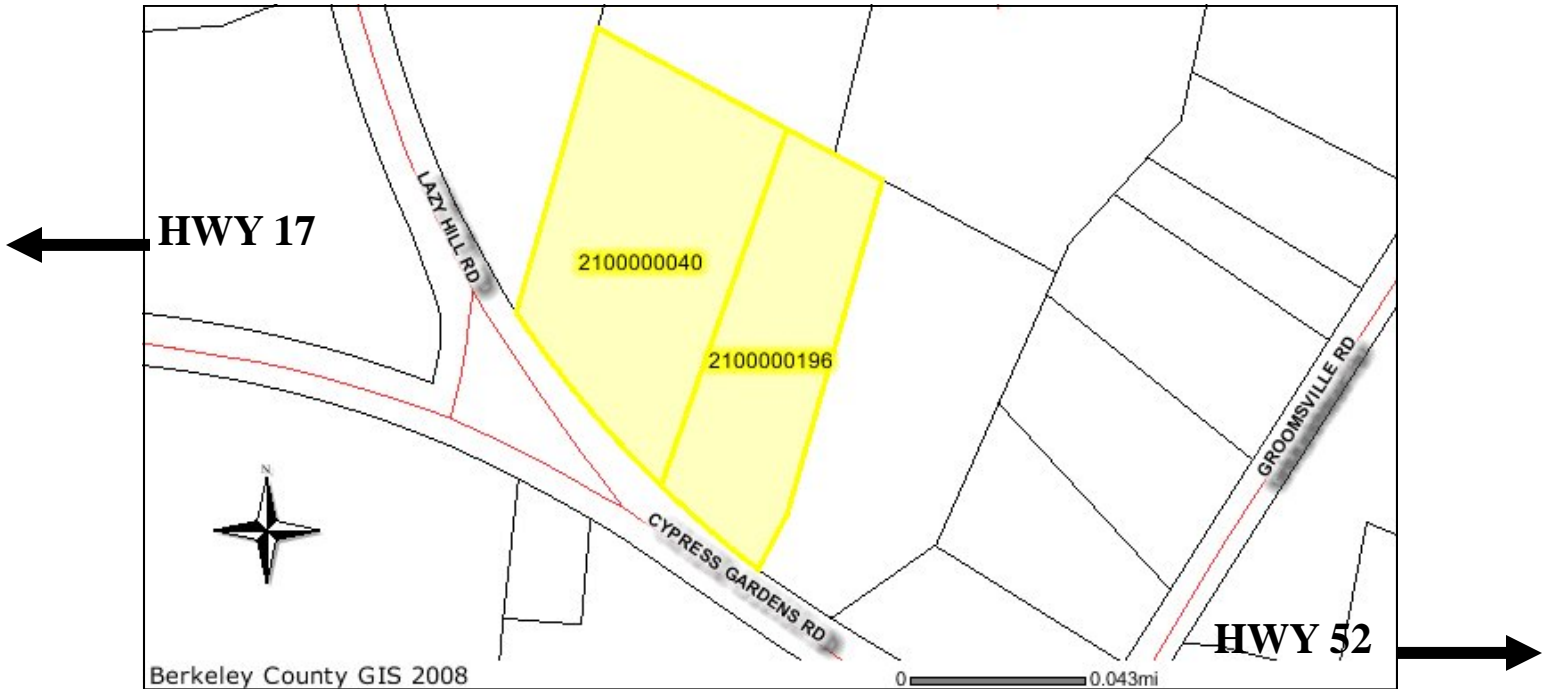


**Cypress Gardens Road
Goose Creek, SC 29445
TMS # 210-00-00-040/196
Berkeley County**



Price \$691,200
4.32 acre site for development.

Near New-

- . Commercial development.**
- . Residential development.**
- . Mt. Holly Industrial Park.**
- . Carnes Cross Roads.**

Please contact for more information
Jim Rowe 843-442-0270
Laura Smith 843-364-7829

